

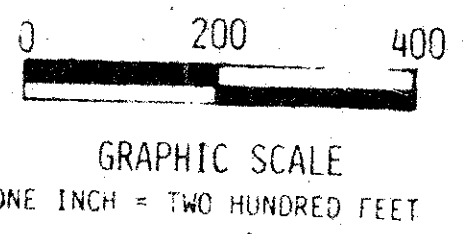
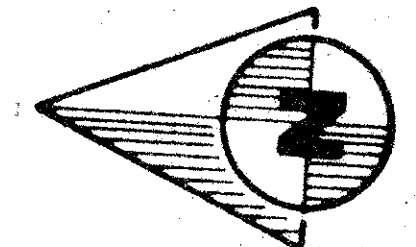
Caloosa 1st Addition

(a rural subdivision)

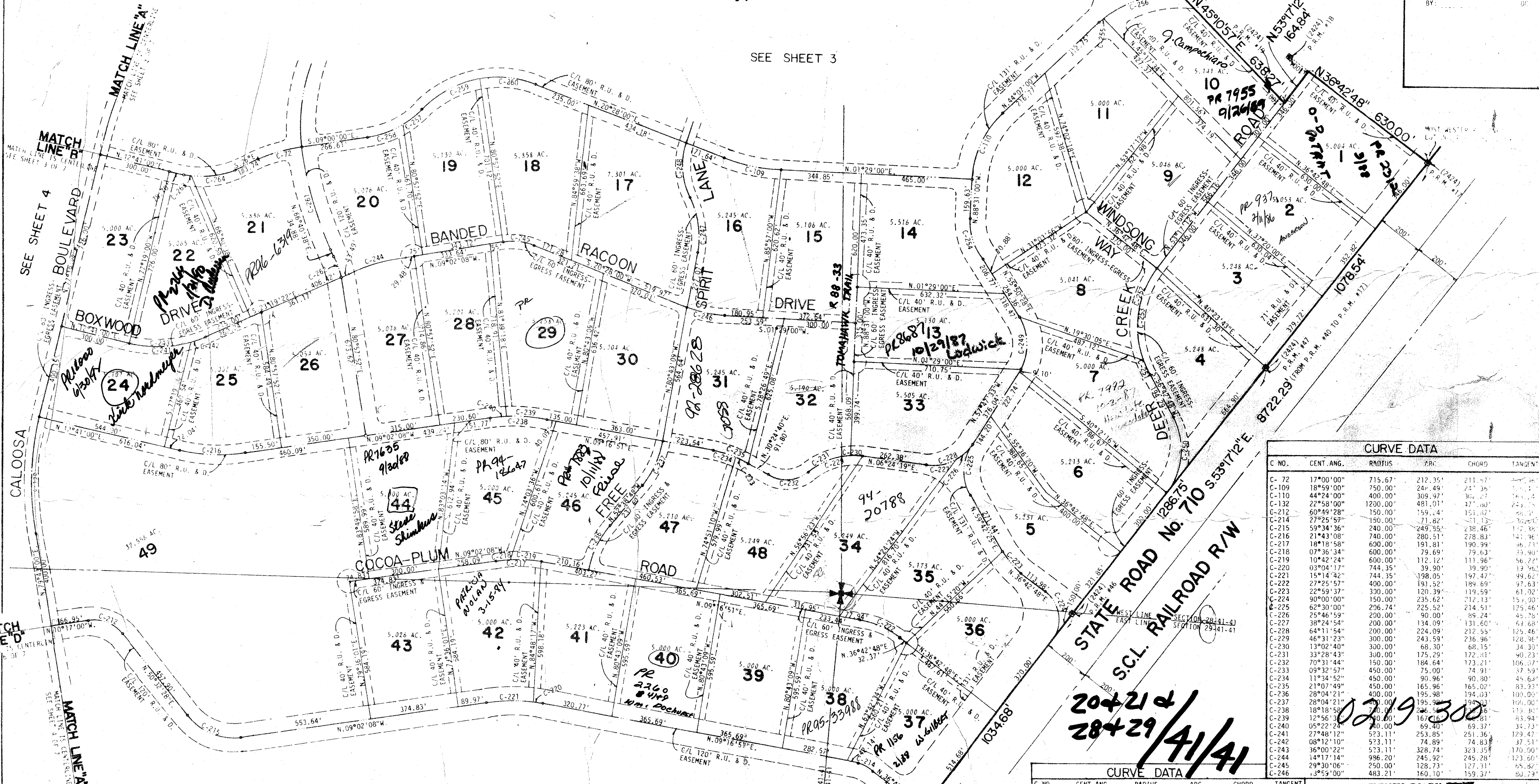
Lying in sections 20, 21, 28, 29, Township 41 So., Range 41 East, Palm Beach County, Florida.

62

STATE OF FLORIDA
COUNTY OF PALM BEACH
THIS PLAN WAS FILED FOR RECORD AT _____ M. THIS _____ TH DAY OF _____ AD. 1978 AND ONLY RECORDED IN PLAT BOOK ON PAGES _____ AND _____ JOHN B. DUNN, CLERK CIRCUIT COURT BY: _____



SEE SHEET 3



C NO.	CENT. ANG.	RADIUS	ARC	CHORD	TANGENT
C-72	17°00'00"	715.67'	212.35'	213.77'	17.14'
C-109	18°59'00"	750.00'	220.49'	225.36'	18.14'
C-110	44°24'00"	400.00'	309.97'	305.27'	30.14'
C-132	22°58'00"	1200.00'	481.01'	481.01'	24.07'
C-212	60°49'28"	150.00'	159.24'	151.42'	16.21'
C-214	27°25'57"	150.00'	71.82'	71.13'	7.30'
C-215	59°34'36"	240.00'	249.55'	238.46'	17.38'
C-216	21°43'08"	740.00'	280.51'	278.83'	14.16'
C-217	18°18'58"	600.00'	191.81'	190.99'	16.73'
C-218	07°36'34"	600.00'	79.69'	79.63'	19.40'
C-219	10°42'24"	600.00'	112.12'	111.96'	56.22'
C-220	03°04'17"	744.35'	39.90'	39.90'	13.46'
C-221	15°14'42"	744.35'	138.05'	137.47'	19.62'
C-222	27°25'57"	400.00'	191.52'	189.69'	17.63'
C-223	22°59'37"	300.00'	120.39'	119.59'	61.02'
C-224	90°00'00"	150.00'	235.62'	212.13'	153.00'
C-225	62°30'00"	206.74'	225.52'	214.51'	125.46'
C-226	25°46'52"	200.00'	90.00'	95.24'	45.78'
C-227	38°24'54"	200.00'	134.09'	131.60'	43.58'
C-228	64°11'54"	200.00'	224.09'	212.55'	125.46'
C-229	46°31'23"	300.00'	243.59'	236.96'	128.36'
C-230	13°02'40"	300.00'	68.30'	68.15'	34.30'
C-231	33°28'43"	300.00'	175.29'	172.11'	40.23'
C-232	70°31'44"	150.00'	184.64'	173.21'	106.07'
C-233	09°32'57"	450.00'	75.00'	74.91'	37.59'
C-234	11°34'52"	450.00'	90.96'	90.90'	45.64'
C-235	21°07'49"	450.00'	165.96'	165.02'	83.33'
C-236	28°04'21"	400.00'	195.98'	194.03'	100.09'
C-237	28°04'21"	400.00'	195.98'	194.03'	100.09'
C-238	18°18'58"	700.00'	246.56'	246.56'	119.30'
C-239	12°56'30"	700.00'	167.16'	167.16'	83.94'
C-240	05°22'24"	700.00'	69.40'	69.37'	34.73'
C-241	27°48'12"	523.11'	253.85'	251.36'	129.42'
C-242	08°12'10"	523.11'	74.89'	74.83'	37.51'
C-243	36°00'22"	523.11'	328.74'	323.35'	170.96'
C-244	14°17'14"	296.20'	245.92'	245.92'	123.60'
C-245	29°30'06"	250.00'	128.73'	127.31'	65.42'
C-246	13°59'00"	483.21'	160.10'	159.37'	80.29'

C NO.	CENT. ANG.	RADIUS	ARC	CHORD	TANGENT
C-247	36°55'09"	391.29'	245.69'	241.46'	127.28'
C-248	45°00'00"	300.00'	235.62'	229.61'	124.26'
C-249	66°21'59"	200.00'	231.66'	218.93'	130.79'
C-250	70°00'00"	280.00'	342.09'	321.20'	196.06'
C-251	14°08'12"	400.00'	98.69'	98.44'	49.60'
C-252	55°51'48"	400.00'	390.00'	374.74'	212.07'
C-253	70°00'00"	400.00'	488.69'	458.86'	280.08'
C-254	35°38'32"	250.00'	153.02'	153.02'	80.37'
C-255	01°43'08"	500.00'	15.00'	15.00'	7.50'
C-256	37°51'14"	500.00'	330.34'	324.36'	171.45'
C-257	12°40'13"	400.00'	88.46'	88.28'	44.41'
C-258	24°59'47"	400.00'	174.51'	173.13'	88.66'
C-259	36°43'49"	450.00'	288.48'	283.56'	149.39'
C-260	30°24'11"	450.00'	238.79'	235.99'	122.28'
C-261	14°19'22"	1791.92'	446.79'	446.78'	225.14'
C-262	11°41'14"	359.05'	89.53'	89.30'	45.00'
C-263	07°04'48"	300.00'	37.07'	37.05'	18.56'
C-264	31°36'12"	300.00'	165.46'	163.39'	84.90'

BENCH MARK
Local surveying and mapping, inc.

CONRAD W. SCHAEFER CONSULTING ENGINEERS INC
PALM BEACH COUNTY FLORIDA

SECTION 6 OF CALOOSA

DATE: 2/2/78
SCALE: 1" = 200'
CWS

SEE SHEET 6

NOTE: ALL RETURN RADIUS WHEN INDICATED ALONG EASEMENT LINE INTERSECTIONS FOR RECREATION, UTILITY AND DRAINAGE EASEMENTS, (R.U. & D. EASE.), ARE 50 FEET UNLESS OTHERWISE NOTED.

ALL RETURN RADIUS ALONG EASEMENT LINE INTERSECTIONS FOR INGRESS AND EGRESS EASEMENTS ARE 25 FEET UNLESS OTHERWISE INDICATED.

ALL CURVES AS SHOWN HEREON SHALL HAVE A 50 FOOT RADIUS

PERMANENT REFERENCE MONUMENTS DESIGNATED THUS:

CALOOSA

20+21 & 28+29 / 41/41

0219 300

34
62

THIS INSTRUMENT WAS PREPARED BY ROBERT J. WISSEMAN IN THE OFFICES OF BENCH MARK SURVEYING AND MAPPING, INC., 1000 PALM BEACH BLVD., SUITE 202, PALM BEACH, FLORIDA 33480-2111.